

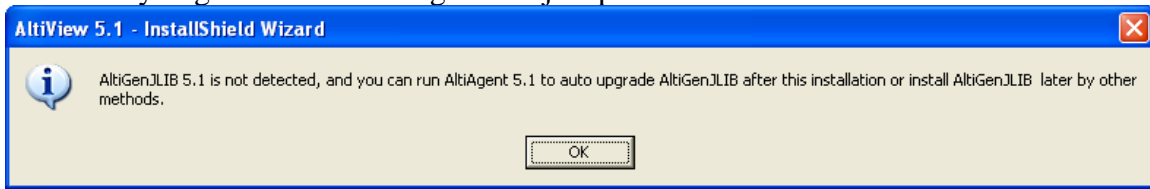
ALTIVIEW INSTALLATION

- ◇ Insert CD
- ◇ Open Altiview Folder
- ◇ Open Installation Folder
- ◇ Double Click on

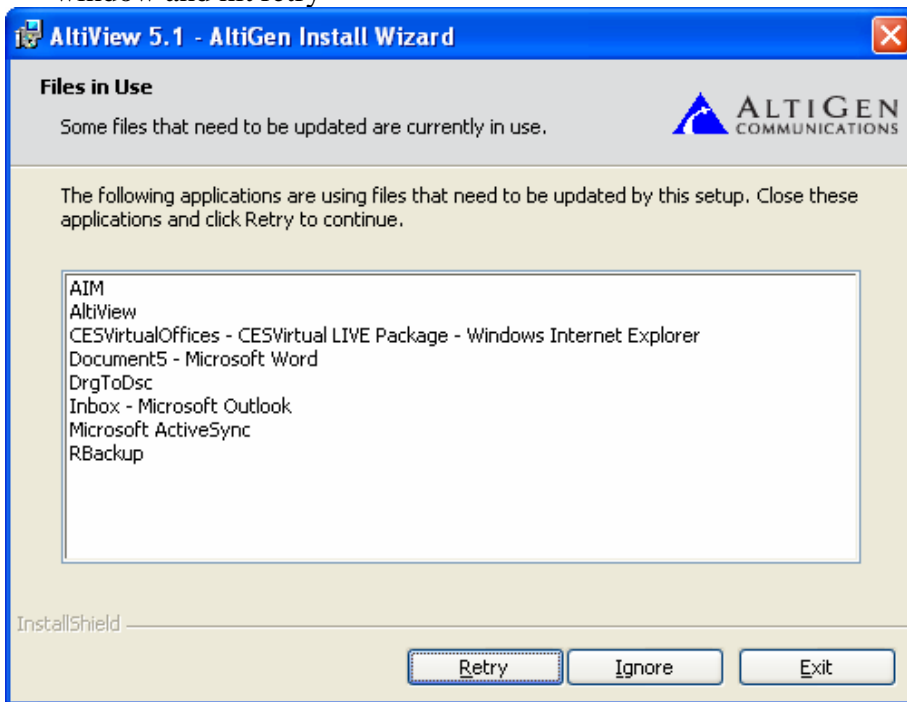


Setup.exe

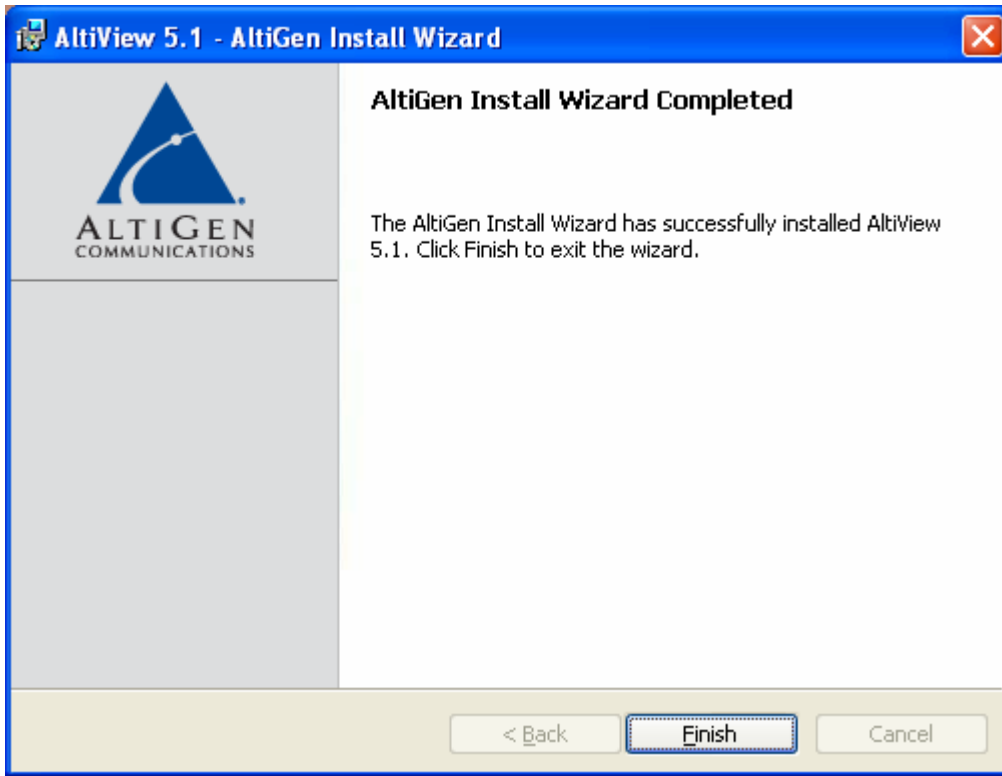
- ◇ Follow the instructions
- ◇ When you get to the following screen just press 'ok'



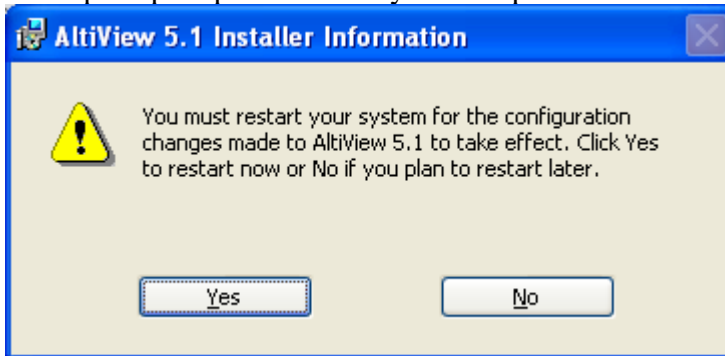
- ◇ If The following window comes up, please close all programs showing in that window and hit retry



- ◇ Click 'Finish'



- ◇ If prompted please restart your computer

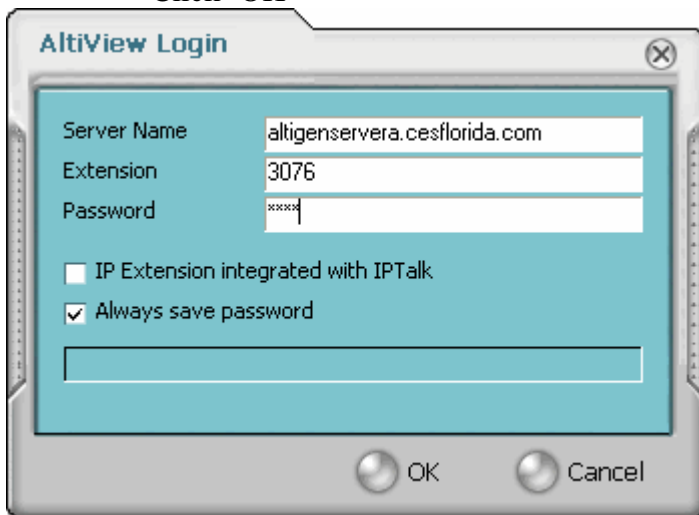


- ◇ Click on your 'Start' Menu, Go to 'All Programs', Go to 'AltiView' click on



AltiView 5.1.lnk

- ◇ Type the following information in the next window:
 - Server Name: altigenservera.cesflorida.com (if your extension resides on server b then type altigenserverb.cesflorida.com. Refer to your 'Welcome Packet')
 - Extension: your 4 digit extension
 - Password: your 4 digit voice mail password
 - Check 'Always save password'
 - Click 'OK'



PLEASE REFER TO THE ALTIVIEW MANUAL FOR INSTUCTIONS ON HOW TO USE THE SOFTWARE OR SCHEDULE A CES REPRESENTATIVE TO GIVE YOU A QUICK OVERVIEW